

# Poisoning dangers for pets during autumn & winter

## Anti-Freeze

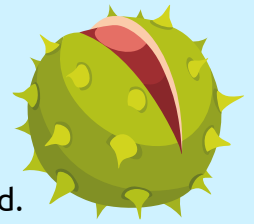
Antifreeze, which contains the substance Ethylene glycol, is poisonous to pets, as little as 1 teaspoon could be fatal to a cat.



**Symptoms include: drooling, vomiting, panting, sedation, lethargy and seizures.**

## Conkers

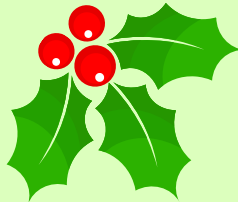
Conkers are poisonous to dogs and can also cause an intestinal blockage if ingested.



**Symptoms include: vomiting, diarrhoea, drooling, abdominal pain, reduced appetite and muscle tremors.**

## Plants & Flowers

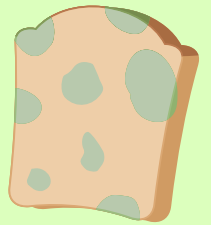
Many plants and flowers can be poisonous to pets, look out for Holly, Ivy, Mistletoe, Poinsettia, Pine Cones and Pine Needles.



**Symptoms include: drooling, nausea, vomiting, diarrhoea and abdominal pain.**

## Mouldy Foods

Mould-contaminated food may contain harmful mycotoxins



**Symptoms include: Seizures, Panting, Vomiting, Weakness, Dehydration, Muscle Tremors and lack of appetite.**

## Xylitol

Xylitol, also known as 'E-Number E967 can be found in many sugar free foods. If ingested it could cause a sudden drop in blood sugar.



**Symptoms include: collapsing, lethargy, weakness, vomiting, jaundice and coma.**

## Chocolate

Chocolate is toxic to both cats and dogs and the higher the cocoa content, the more toxic it can be.



**Symptoms include: vomiting, diarrhoea, rapid breathing, heart palpitations, dizziness and in some cases seizures.**

## Human Medication

Pets should never be given human medication unless under the direction of a vet. Pets are much smaller than humans, making them more susceptible to overdose when they consume even a small quantity.



## Wild Mushrooms

Like humans, pets need to be careful when around wild mushrooms as some can be fatal if ingested.



**Symptoms include: vomiting, diarrhoea, lethargy, weakness and jaundice.**